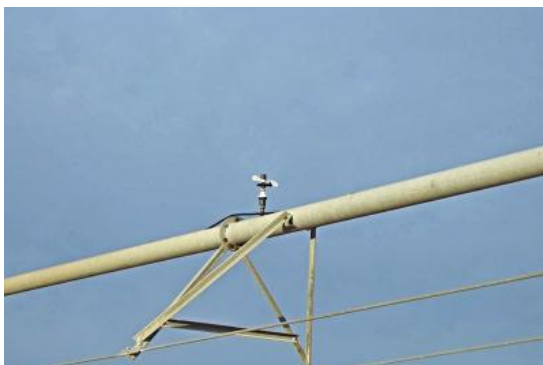




415 W. 4th Ave./ PO Box 1098
Holdrege, NE 68949
Phone: 866-995-8067
Fax: 308-995-8411

159 +/- ACRE PIVOT IRRIGATED FARM





Price: \$1,275,040.00

Total Acres: 159.38

Irrigated Acres: 134.50

Dryland Acres:

Grass Acres:

CRP Acres:

CRP Payments:

CRP Expiration:

Taxes: 8796.50

FSA Payments:

Mineral Rights: all owned convey

Highly productive farm with abundance of water located close to many grain elevators and ethanol plants. Soils are highly fertile with the use of livestock manure. New irrigation pump installed in 2012.

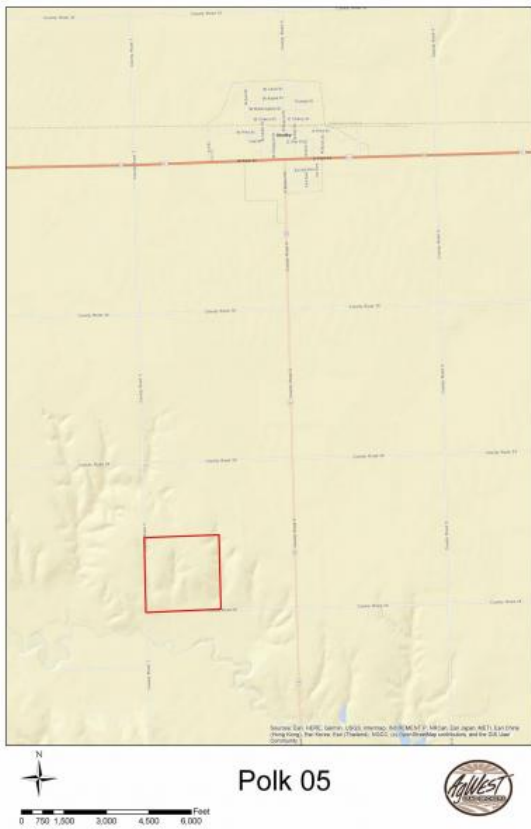
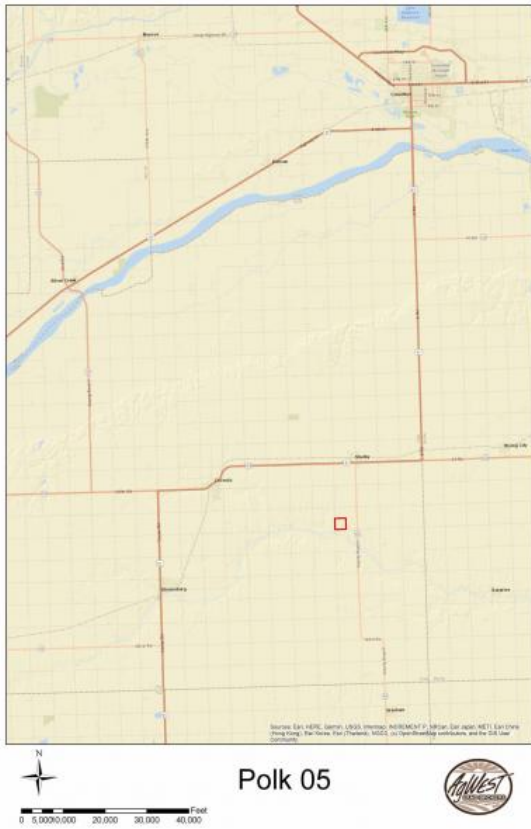
Legal Description: SW 1/4 Section 28, Township 14 North, Range 1 West



Take Highway 92 west out of Shelby, Nebraska one mile to "T" Road then turn south and go 3 miles to 128 Road. The property is to the northwest of this intersection

Latitude: 41.152901

Longitude: -97.44508863



Listing Agent



Kraig Urkoski
(<https://www.agwestland.com/agent/kraig-urkoski/>)

Email
(mailto:kraig.urkoski@agwestland.com)
308-548-
8431

URL to article: <https://www.agwestland.com/property/159-acre-pivot-irrigated-farm/>

[Click here to](#)

© Copyright AgWest Land Brokers, LLC



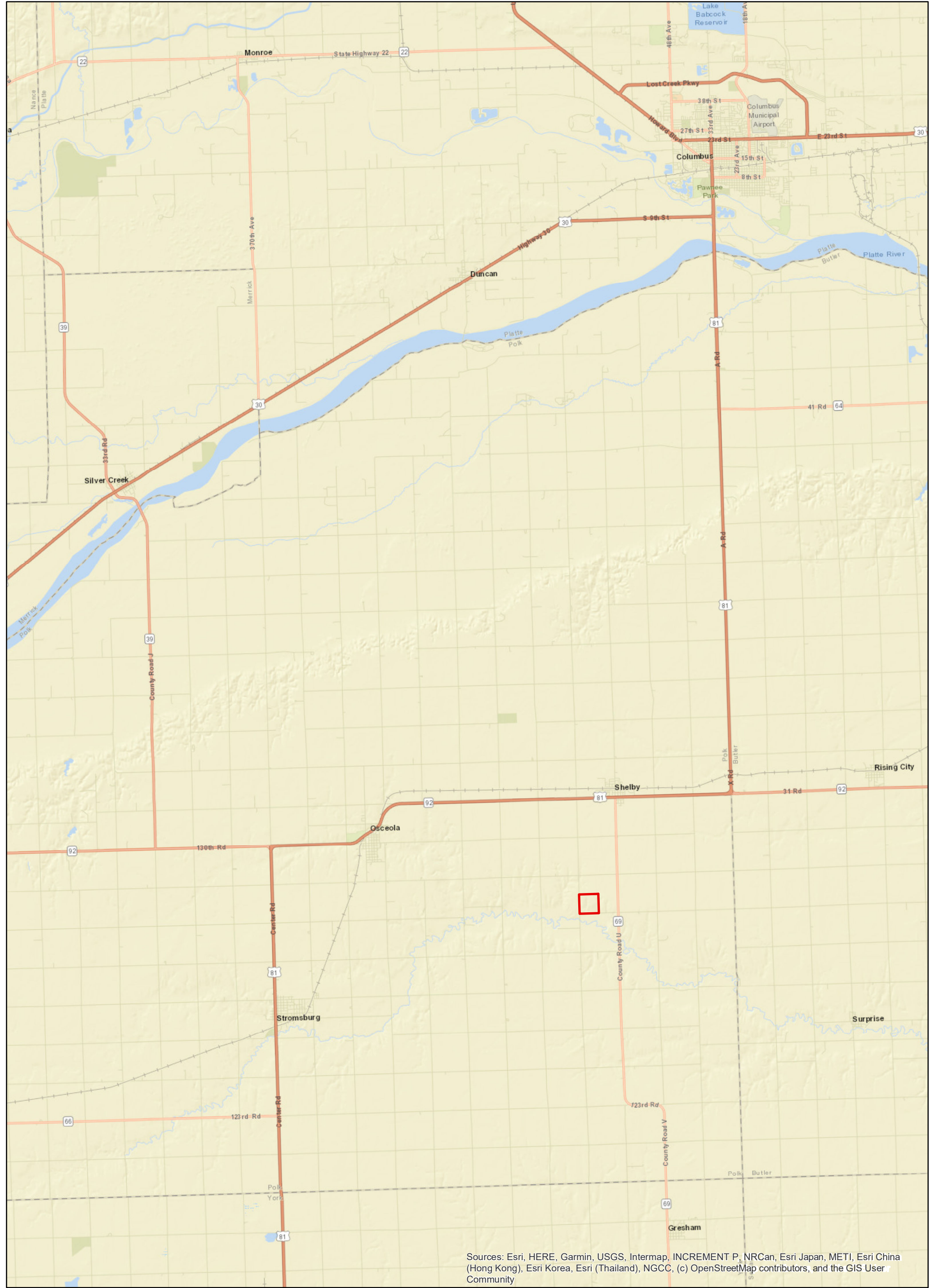
Source: Esri, DigitalGlobe, GeoEye, Earthstar Geographics, CNES/Airbus DS, USDA, USGS, AeroGRID, IGN, and the GIS User Community



0 145 290 580 870 1,160 Feet

Polk 05





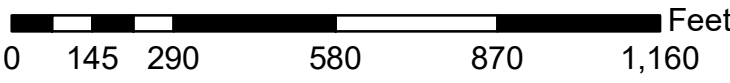
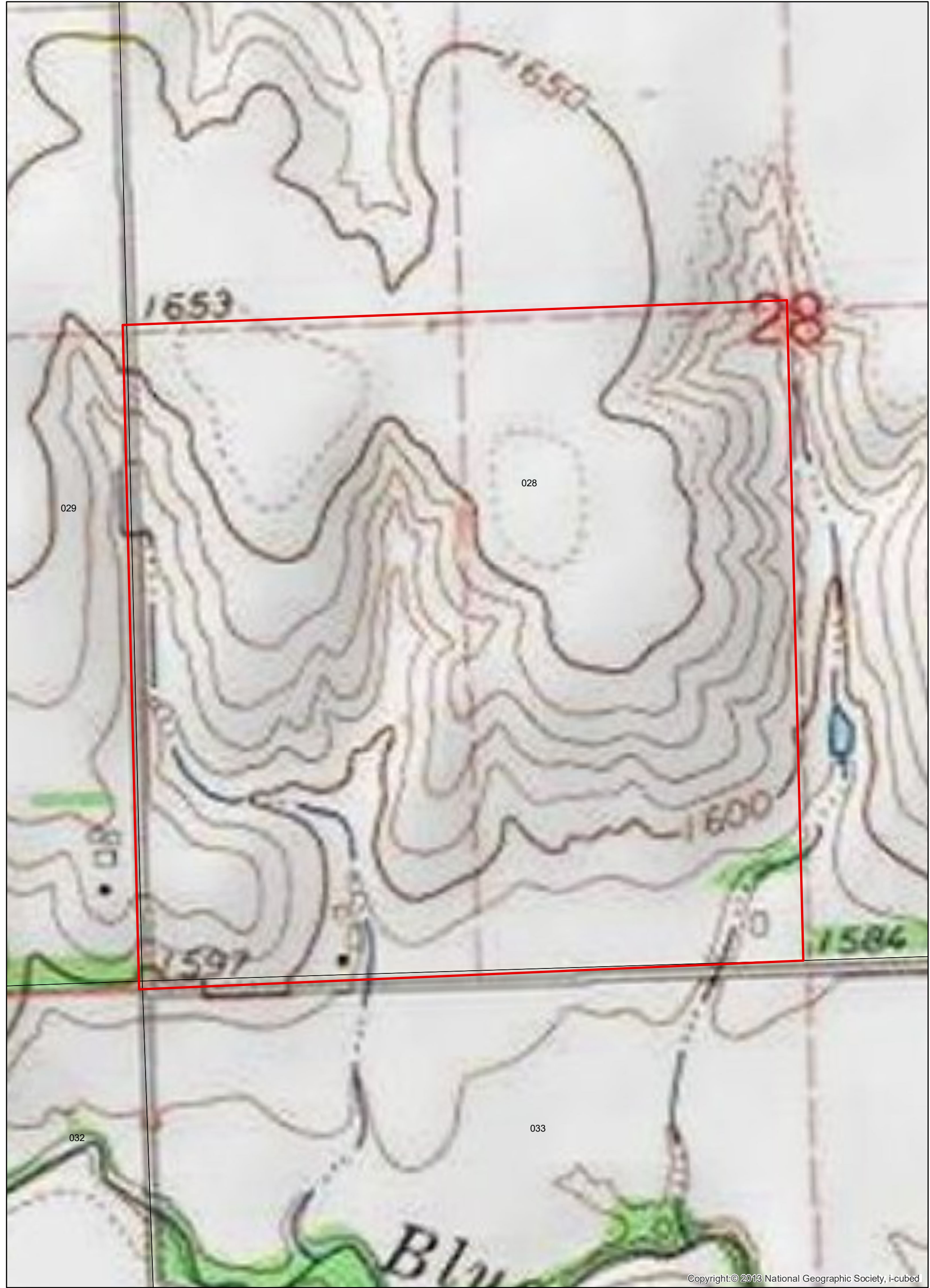
Sources: Esri, HERE, Garmin, USGS, Intermap, INCREMENT P, NRCan, Esri Japan, METI, Esri China (Hong Kong), Esri Korea, Esri (Thailand), NGCC, (c) OpenStreetMap contributors, and the GIS User Community



0 5,000 10,000 20,000 30,000 40,000 Feet

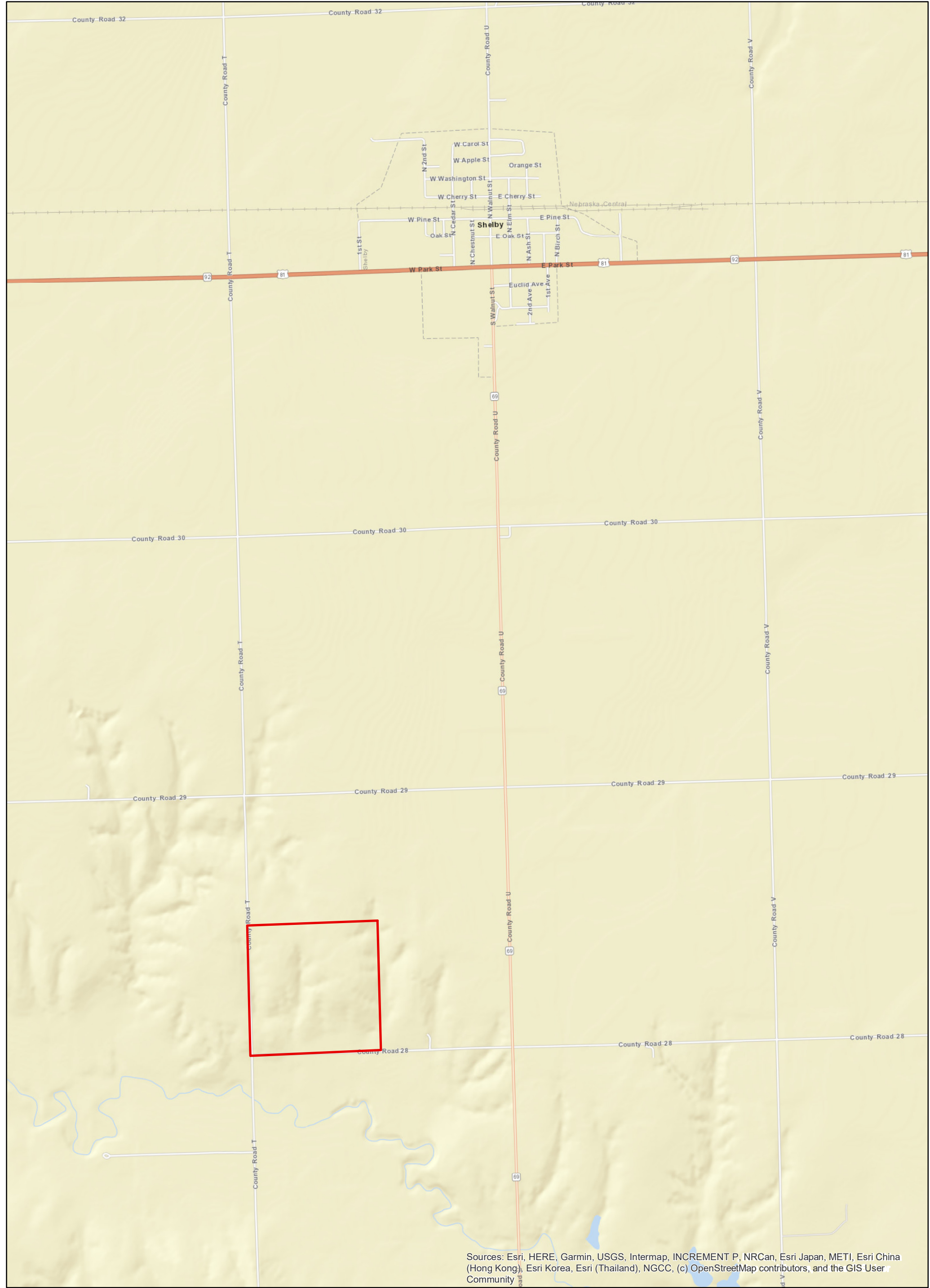
Polk 05



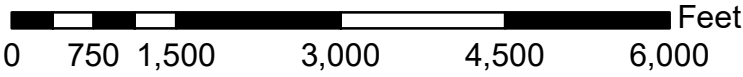


Polk 05





Sources: Esri, HERE, Garmin, USGS, Intermap, INCREMENT P, NRCan, Esri Japan, METI, Esri China (Hong Kong), Esri Korea, Esri (Thailand), NGCC, (c) OpenStreetMap contributors, and the GIS User Community



Polk 05

